

CHESHIRE EAST SAFEGUADING ADULTS BOARD



ANNUAL REPORT 2024 – 2025

Independent Chair's Welcome

Welcome to the Cheshire East Safeguarding Adults Partnership Annual Report 2024/2025. I have served as Independent Chair since January 2023 and remain privileged to work with such dedicated professionals committed to safeguarding adults across Cheshire East.

This has been a busy and productive year, with significant progress made against the 2022–2025 Strategic Plan. Work on the new plan is well underway and will launch early next year.

Our Board continues to be intelligence- and data-led, focusing on key themes including self-neglect, hoarding, transitions into adult services, safeguarding within the criminal justice system, and domestic abuse - particularly controlling and coercive behaviour.

Rough sleeping has become a standing agenda item, and we have received valuable assurance about the excellent safeguarding work delivered by the Housing Options & Homelessness Team.

Demand for adult safeguarding continues to rise, with increasingly complex concerns. Safeguarding Adult Reviews remain essential for learning and improvement. While our governance processes are strong, we are developing better ways to evidence how partners embed learning in day-to-day practice.

A new multi-agency best practice approach—Practice, Management and Learning (PML)—introduced by Board Manager Katie Jones, has been highly successful in identifying and sharing learning efficiently across sectors.

Training remains a key priority, with 1,598 people receiving safeguarding training in 2024/2025.

We are proud of the Board's contribution to the recent CQC 'Good' rating and have already begun work on the recommendations. Our Service User Group continues to receive national recognition for ensuring the adult's voice is central to our policies and practice.

While this report highlights many achievements, it also acknowledges upcoming challenges—particularly proposed changes within Integrated Care Boards and their potential impact on adult safeguarding.

Finally, I offer my sincere thanks to my Business Manager, Business Team, Board Members, and all subgroup Chairs and Members for their continued commitment to safeguarding adults in Cheshire East.



The Partnership

Cheshire East Safeguarding Adults Board (CESAB) is a partnership of statutory and non-statutory organisations, representing health, care and support providers and the people who use those services across the borough. Membership comprises of the senior leaders across these organisations, who under the leadership of the independent Chair, work collaboratively to improve adult safeguarding across the borough.

The partnership includes:

Statutory Partners -

Cheshire East Council (Adult Social Care)

Cheshire and Merseyside NHS Integrated Commissioning Board (ICB)

Cheshire Police

Non-Statutory Partners -

Disability Positive (Service User voice representation)

Mid Cheshire Hospital NHS Trust (Leighton Hospital)

Eastern Cheshire NHS Trust (Macclesfield Hospital)

Cheshire and Wirral NHS Partnership (Mental Health)

North West Ambulance Service

Health Watch Cheshire East

Cheshire Probation Service

Cheshire Fire and Rescue

Faith Sector Representation

Housing

Domestic Abuse Services

Local Councillor

Resources and Funding

The work of the Board, subgroups, training programme, and that of the Independent Chair are funded through SAB contributions from the three statutory partners. A well-resourced Board is essential to enable it to deliver its statutory duties. Funding contributions from our partners supports the board to fund Safeguarding Adult Reviews, learning events and other Board activities. Funding from Lifelong Learning supports the SAB's training offer.

Our principles

Our safeguarding principles mirror those listed in the Care Act 2014 and underpin all adult safeguarding work:

Empowerment: People being supported and encouraged to make their own decisions and informed consent.

“I am asked what outcomes I want from the safeguarding process and this directly informs what happens.”

Prevention: It is better to take action before harm occurs.

“I receive clear and simple information about what abuse is, how to recognise the signs and what I can do to seek help.”

Proportionality: The least intrusive response appropriate to the risk presented.

“I am sure that the professionals will work in my interest, as I see them, and they will only get involved as much as needed.”

Protection: Support and representation for those in greatest need.

“I get help and support if I need to report abuse and neglect. I get help so that I am able to take part in the safeguarding process to the extent I want.”

Partnership: Local solutions through services working with their communities. Communities have a part to play in preventing, detecting, and reporting neglect and abuse.

“I know that staff treat any personal and sensitive information in confidence, only sharing what is helpful and necessary. I am confident that professionals will work together and with me to get the best result for me.”

Accountability: Accountability and transparency in delivering safeguarding.

“I understand the role of everyone involved in my life and so do they.”

**Quotes taken from the Department of Health's Government Guidance 'Revisiting Safeguarding' March 2022*

What is Adult Safeguarding?

Safeguarding adults means protecting adults at risk from abuse or neglect by taking steps to prevent or stop it from happening. The Care Act 2014 and other statutory guidance sets out a clear legal framework for how local authorities and other organisations that form the SAB, should protect adults at risk of abuse or neglect. Safeguarding is about protecting an adult's right to live a life free from abuse and neglect and has put systems in place in accordance with the legislative framework and guidance to keep adults with care and support needs safe.

Who do we help keep safe?

All adults aged 18 and over who:

- Need care and support, even if they are not getting care or support now.
- They are experiencing, or at risk of, abuse or neglect.
- As a result of their care and support needs, is not able to protect themselves from risk of abuse, experience of abuse or neglect.

What is abuse?

Abuse is any action, deliberate or unintentional, or a failure to take action or provide care that results in harm to the adult (this is called neglect).

Abuse can be a single or repeated act or lack of appropriate action, which causes harm or distress and sometimes death.

Abuse can happen anywhere, at any time, such as at home, a day care centre or in a hospital.

There are many different types of abuse such as physical, emotional and neglect; more details about abuse can be found on the Cheshire East Safeguarding Adults webpages www.stopadultabuse.org.uk



CESAB Service User Group

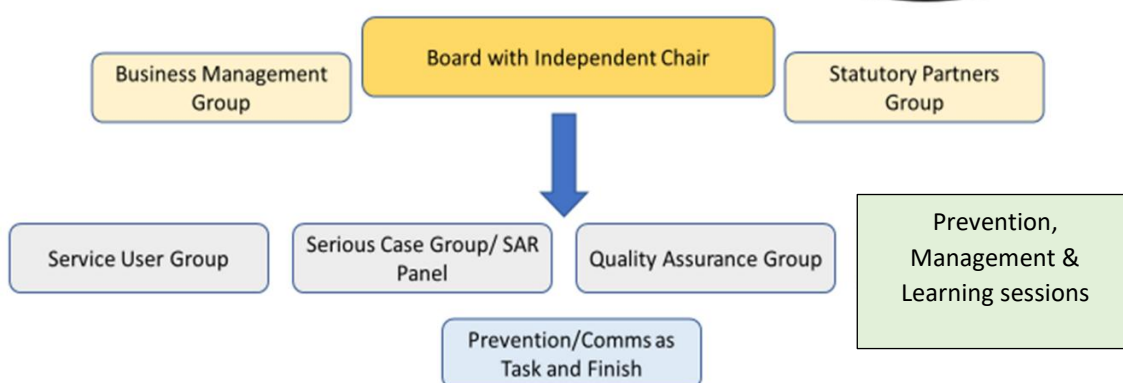
Governance Arrangements

The Board appoints an Independent Chair whose role it is to lead and direct its work and provide the support to meet the Board’s objectives. The SAB has maintained its commitment to strong partnership working with the Cheshire East Safeguarding Children’s Partnership and the Safer Cheshire East Partnership with all three partnerships working together on joint priorities and safeguarding issues which impact on young people, adults, and community safety. The Board reports regularly to the Health and Wellbeing Board on its progress and on any Safeguarding Adult Reviews.

Safeguarding Adults Board Structure

The Board leads adult safeguarding arrangements across Cheshire East and oversees and coordinates the effectiveness of the safeguarding work of its member and partner agencies. A SAB Business Manager and Business Officer support the board, its Business Management Group, and subgroups. The Board also employs a Training Officer to facilitate and deliver adult safeguarding training across the Cheshire East Borough. Subgroups and Prevention, Management & Learning sessions (PML) help to deliver the objectives of the Board in four distinct areas: Service User Reference and Voice, Safeguarding Adult Reviews, Quality and Assurance and Learning and Development. In addition, there are also task-and-finish groups to deliver specific Board strategic priorities -

How we work: Structure of the Board



THREE YEAR STRATEGY 2022 – 2025

Under the Care Act 2014, Safeguarding Adults Board must produce a three-year strategy. 2025 saw the completion of this strategy, with work throughout the year on establishing the 2026-2029 vision.

What is a 3-year Strategy?

Our strategy sets out:

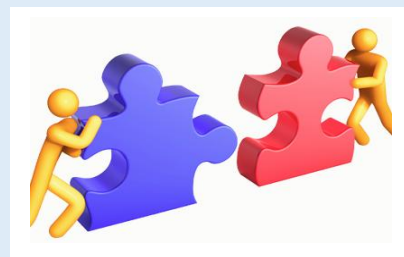
- Our Board’s vision
- Our aims and objectives for this three-year period
- How we will work towards these objectives

Our full plan can be found on our website www.stopadultabuse.org.uk but a summary is below –

Our Vision: People in Cheshire East have the right to live a life free from abuse and neglect			
Our purpose: To stop Adult Abuse, Neglect and Exploitation			
Our Ambitions		Goals by 2025	
Proportionate Protection - <i>Support and representation for those in greatest need, with the least intrusive response appropriate to the risk presented.</i> Enabling staff to respond to complex safeguarding by working in partnership with Key Partners			
Ensure the safety and wellbeing of people at risk of abuse and neglect in Cheshire East		All professionals will follow Mental Capacity and Best Interest decision making processes and making safeguarding personal principles People at risk of abuse and neglect get help and support to report abuse. People at risk of abuse and neglect are supported to take part in the safeguarding process.	
Empowerment - <i>Personalisation and the presumption of person-led decisions and informed consent.</i> Embed person centred approaches to adult safeguarding			
Ensure the voice of people at risk of abuse and neglect, influence safeguarding practices across Cheshire East		People at risk of abuse and neglect are asked for their outcomes from the safeguarding process and these directly inform what happens.	
Prevention - <i>It is better to take action before harm occurs.</i> Improve awareness of adult safeguarding across all communities and partner organisations & learn from experience and Safeguarding Adult Reviews to improve how we work			
Provide information and support in accessible ways to help residents and communities of Cheshire East understand adult abuse and neglect.		Produce clear and simple guidance about what abuse and neglect is, how to recognise the signs and how to seek help. Identify local solutions through services working within diverse communities across Cheshire East.	
Governance: Ensure our governance is of the highest possible standard & open to challenge, to support the achievement of our strategy and ensure accountability and transparency in delivering safeguarding adults at risk of abuse and neglect.	Partnership: Work as a multi-agency board to ensure there is effective partnership working and leadership across all agencies for safeguarding adults at risk of abuse and neglect.	Impact: Continually measure and test the effect of our work, improve quality, and monitor the implementation of changes, which prevent similar abuse or neglect happening to other people.	Person Centred Engagement: Ensure that people are supported in the way that they want, are empowered to make decisions, and can achieve the best outcomes.

Transition for young adults from Children’s to Safeguarding Adults Services.

The NICE (National Institute for Health and Care Excellence) guidelines state every service involved in supporting a young person should take responsibility for sharing safeguarding information with other organisations including adult services during transition. The Board were keen to explore this period before, during and after a young person moves from children’s to adults' services. The Board sought assurance that services in Cheshire East helped young people, and their parents/ carers feel supported during this transition.



What next? The Preparing for Adulthood team have produced a guide to understand what good transition should include and look like. This information explains what young people and their parents or carers should expect from children's and adults' services during transition. The Board will promote this guide on its website and with all partners. The SAB will also ask for evidence from all partners around their transition work in the annual self-assurance audit.

In line with the **EMPOWERMENT AMBITION** of the three-year strategy: *Ensure the voice of people at risk of abuse and neglect, influence safeguarding practices across Cheshire East*

Safeguarding adults and the criminal justice system.

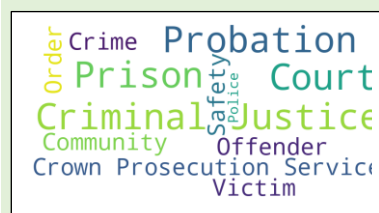
The criminal justice system plays a crucial role in safeguarding adults at risk. This Board meeting focused on the work of Cheshire Police, Cheshire Probation Trust, and HMP Styal (our local Prison). The Care Act 2014 established responsibilities for local authorities and relevant partners – including criminal justice partners – to cooperate in protecting adults at risk. While the Criminal Justice Service prioritises public protection, it also has a responsibility to safeguard individuals who may be at risk of harm. The Board heard how effective partnership working within the Criminal Justice system at both a national and local level is essential to build and sustain effective adult safeguarding practices.

What next?

The criminal justice system must make sure that safeguarding is central when using criminal justice policies and applying public protection laws.

The Board will:

- Help create the Pan-Cheshire All Age Exploitation Strategy.
- Ask Cheshire Police for updates on Right Care, Right Person.
- Request regular feedback from HMP Styal about safeguarding activity in the prison.



In line with CESAB Strategy Partnership Ambition - *Work as a multi-agency board to ensure there is effective partnership working and leadership across all agencies for safeguarding adults at risk of abuse and neglect*



Training Figures-

Care Providers and others	DA and Sexual Violence	Licensed Drivers	Care Concerns	DoLS
1199	35	91	226	47
Total number of individuals trained in 2024-2025			1598	

Training is now a well-established part of the services provided by the Safeguarding Adults Board. The Training Officer continues to work together with people and organisations to prevent and stop both the risk and experience of abuse and neglect (Care Act 2014). Providers state how they value the opportunity of a face-to-face training.

In previous years, the SAB has collaborated with Cheshire East Licensing Team to raise drivers’ awareness of safeguarding matters, this has continued into the 24-25 training year; this project has reached most drivers but will continue to be offered into 25/26. This will catch anyone who hasn’t received the training and will also support those new drivers coming into their service.

The SAB has worked collaboratively with other Cheshire East service providers, such as the Registrars Service and Environmental Protection Team, to deliver bespoke training to their staff.

Deprivation of Liberty (DoLS) training has been delivered in collaboration with the DoLS team manager and is continuing into the next year.

Safeguarding Adults at Risk: Enhancing Response to Domestic Abuse and Sexual Violence training, has gone from strength to strength; this multi-agency training has seen participants from health, the police, the prison sector, general practitioners, social care, and faith organisations participating in a joint 3-hour workshop. The training is delivered together with Macclesfield Hospital’s Independent Domestic Violence Advocate (IDVA).

Care Concern training continues online monthly. The Care Concern process is where providers can respond to incidents of poor-quality care without the need to initiate a safeguarding concern. The training supports the recognition and difference of those low-level concerns or the need to report to our safeguarding team.

The full 24/25 SAB Training Report is available here - [Learning and Development](#)

ADULT SAFEGUARDING WEEK 2024

Cheshire East Safeguarding Adults Board supported National Safeguarding Adults Week 2024 with a range of activities that made people aware of the different types of abuse that some people experience. The National Adult Safeguarding week was an excellent opportunity to promote adult safeguarding and the work that a number of organisations are doing to protect residents across Cheshire East. Safeguarding Adults Week 2024 saw organisations coming together to raise awareness of important safeguarding issues. The aim was to highlight safeguarding key issues, facilitate conversations and to raise awareness of safeguarding best practice. The week enabled more organisations and individuals to feel confident in recognising signs of abuse and neglect and recording and reporting safeguarding concerns. The theme for Safeguarding Adults Week 2024 was "Working in Partnership", emphasising the importance of collaboration in creating safer environments for individuals. Each day focussed on a different topic, with a range of events such as webinars, conferences, and public events.



Partners from Cheshire Fire and Rescue, Change Grow Live and Cheshire East Council at a Public Engagement Event in Crewe Market Hall. The day focussed on Scams, Community Safety, Adult Safeguarding, and Support Services for adults.



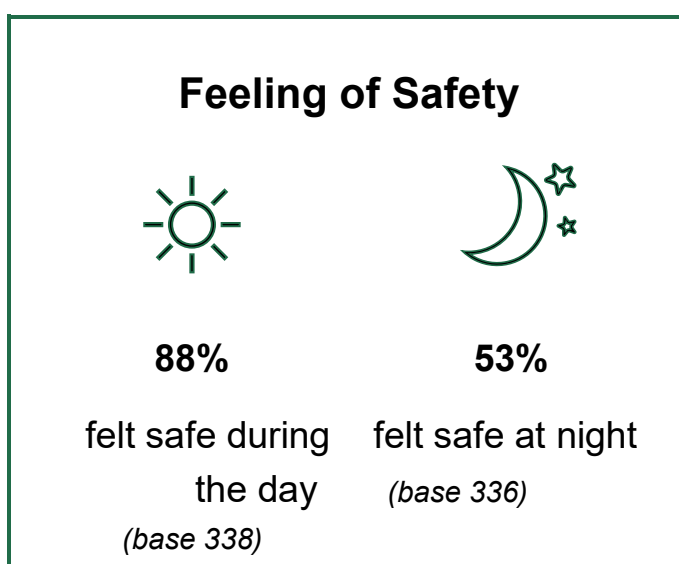
Safeguarding Adults Week 2024 Community Survey – Highlight Report



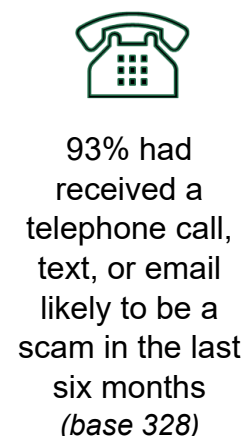
Each year, Cheshire East Safeguarding Adults Board participate in the national Safeguarding Adults Week which in 2024 ran from 18th – 22nd November.

As part of the Board’s commitment to adult safeguarding and community safety, a survey was conducting from 1st November to 22nd November 2024.

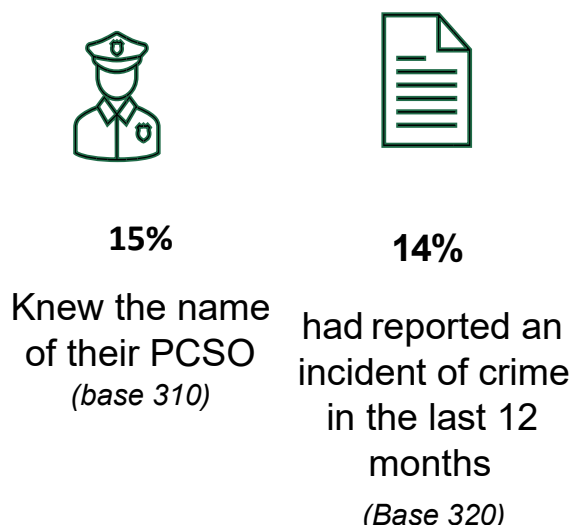
The aim of the survey was to find out how safe people feel in their local community, and to ascertain awareness of what adult safeguarding is / how to report concerns about an adult in Cheshire East. In total **338** responses were received. The key results are as follows:



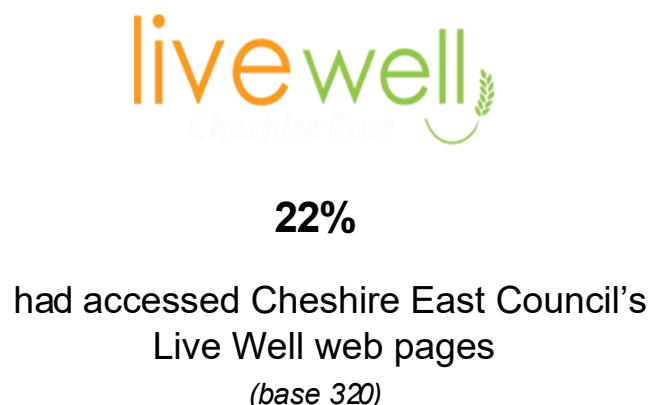
Scams / cold callers



Reporting a crime



Wellbeing/ support services



Awareness of safeguarding adults / adult abuse



73% knew what adult safeguarding or adult is <i>(base 327)</i>	27% had seen information about adult safeguarding abuse is e.g. on leaflets, websites <i>(base 328)</i>	61% would know what to do if they, or another adult was experiencing abuse <i>(base 328)</i>
---	--	---

Awareness of hoarding

72%

knew what hoarding is

How respondents would recognise the signs of hoarding:

(key comments provided from a total of 201 respondents)



Cluttered house / home with not much space to move around

Excessive buying of items not necessarily required / loss of income

Inability / reluctance to throw items away / attachment to items

Collecting an excessive number of items / stockpiling

Piles of items inside the home / outside in the garden – could be old / broken

Person reluctant to let friends / family visit them at home



Report produced on 10 December 2024 by the Engagement and Communications Team, Cheshire East Council, Email RandC@cheshireeast.gov.uk for further information

Key Safeguarding Data for 2024-25

421,000 adults live in Cheshire East



94,370 are aged 65 or over.



18% more women than men were alleged victims of abuse in 24/25.
(59 % of women, 41% of men)

The age groups of people who were involved in safeguarding concerns or enquiries –

Age Range	Number of adults
18-64	2,249
65-74	671
75-84	1,228
85-94	1,098
95+	181

Total number of individuals who have had concerns or enquiries – **5,427**

6,242 safeguarding concerns raised during the year. (individuals may have more than one concern)

1,135 concerns became s.42* enquiries.

*Under Section 42, Care Act 2014



96% of individuals were happy with the outcome of their Safeguarding enquiry
(Concluded S.42 enquiries)



12,106 Care Concerns received.



18,388 Total of all safeguarding and Care Concerns received in 24/25



848 (75%) concluded s.42 safeguarding enquiries listed the source of risk as someone known to the person at risk

327 (29%) concluded s.42 safeguarding enquiries involved service providers

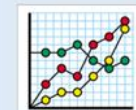
287 (25%) listed the source of risk as someone not known to the person at risk



496 enquiries involved allegations of neglect.

304 enquiries involved alleged physical abuse.

Abuse or neglect occurred in the person at risk's home **797** times.



4,636: White British.

109: Black and ethnic minority people had Safeguarding concerns.

(Please note that ethnicity is self-reported, and individuals might choose for their ethnicity not to be recorded. There were **682** cases where the individual refused for their ethnicity to be recorded or where ethnicity was not known.)



3% increase in the number of concerns raised, up from **6,088** last year.



6% increase in the number of enquiries started, down from **1,223** last year.

SAFEGUARDING ADULT REVIEWS (SARs):

Under the Care Act 2014, the SAB is responsible for the coordination of Safeguarding Adults Reviews (SARs). These independent reviews are commissioned where there has been an incident of serious harm or death involving an adult at risk, and its focus is on capturing learning. They set out to establish what may have gone wrong and to identify where agencies or individuals could have acted differently or worked better together. In 2024-25 CESAB published ONE safeguarding adults review –

The Clive Treacy SAR

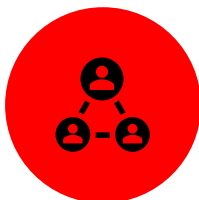
Cheshire East Safeguarding Adults Board (CESAB) and Staffordshire and Stoke-on-Trent Adults Safeguarding Partnership Board (SSASPB) jointly commissioned a SAR in the respect of Clive Treacy, who died in 2017. Clive had a learning disability, epilepsy, and complex mental health needs. He was placed by Staffordshire County Council into the David Lewis Centre in the borough of Cheshire East in 1993. This D-SAR relates to historical incidents of abuse and examines what is now in place to protect adults at risk since safeguarding became a statutory duty under the Care Act in 2014.

CESAB and SSASPB appointed Professor Michael Preston-Shoot to be the author of the SAR. All relevant organisations participated in the SAR, contributed to the learning, and provided assurances about current adult safeguarding practices under the Care Act 2014. Both Boards fully support the recommendations made in the SAR and are committed to ensuring that the further learning identified in the review is actioned and progressed. The following five documents - the full review report, the Independent Chair's Joint Statement, the 7-minutes briefing, the pen picture of Clive Treacy and the impact statement provided by Clive's family can be found here [Safeguarding Adults Review SSASPB](#).

What we learnt from The Clive Treacy D-SAR –



The importance of multi-agencies working together



The review has highlighted the importance of staff across services following agreed procedures in response to allegations of abuse or neglect by people in positions of trust.



Guidance in place to support the importance of achieving best evidence when safeguarding adults at risk.



Complaints from families are information to be taken seriously. There are legal rules to be followed when complaints are received about the quality of care.



The importance of clearly recording on casework recording systems and ensuring records are up to date and retained/archived appropriately.

Case Studies

Michael

Michael* is in his early 60s and lives in the East of Cheshire East borough. Michael has been married and has three adult children and three grandchildren, but he does not see them regularly. Michael had a successful career with Lancashire Constabulary and retired after completing thirty years of service. Approximately five years after retiring, Michael began to experience some difficulties with his mobility. Michael's ability to care for himself and his home began to reduce, and he started to drink more alcohol.

Michael's tenancy support officer, Jason* submitted a safeguarding referral to the local authority as he thought that Michael might be borrowing money to pay for alcohol and expressed concern that he was being financially abused as he received late payment letters for two of his utility bills when previously he paid his bills on time. Michael missed two pre-arranged GP visits and two visits from the district nurses. Michael's GP and the care agency submitted safeguarding referrals to the local authority as a result of Michael's alcohol use, and concern for his welfare.

Michael initially said that he did not want a social worker to visit him. Ben*, the social worker, established that Michael had a good relationship with Jason. Michael agreed for Ben to visit if Jason was also present. After the visit, Jason told Ben that he was shocked at Michael's presentation as he had deteriorated significantly over a short period. Jason agreed to put a marker on Michael's address to alert other colleagues to the fact that Michael was vulnerable. Michael refused to answer questions about how he was paying for alcohol. Ben spoke with Gary*, the local PCSO who agreed to monitor the area where Michael lived.

Michael subsequently agreed for Ben to visit on his own and began to open up about his use of alcohol. Michael said that he was ordering alcohol over the internet as he was not able to get to the shops. He disclosed that last month, he spent all his pension and had now spent all his savings, so had contacted a money lender that he had seen advertised on social media to fund his alcohol for this month. Michael agreed to share the details with Ben and said that he was happy for Ben to speak with Gary and Jason.

Ben established that the money lender was not authorised by the Financial Conduct Authority and worked with Gary, the local authority's Trading Standards team, and the Illegal Money Lending Team to ensure that Michael was not at risk of further financial abuse. Michael enjoyed talking about his police service and gave consent for Ben to contact the Police Benevolent Fund. Michael's application was successful, and he was awarded financial assistance to pay for a mobility scooter to help him access the community. Michael started engaging with his GP as he was able to get to the surgery independently. Gary put Michael in touch with a group for retired police officers which reduced social isolation.

Michael told Ben that since he was able to talk about his alcohol use and financial abuse, he felt much better. He said he wanted to reduce his alcohol consumption and agreed to a referral to the local substance misuse provider as one of the outcomes of the safeguarding

enquiry. Ben remained in contact with Michael for a few months once the safeguarding enquiry was closed. Michael told Ben that he did not want to give up alcohol completely but had been able to reduce his drinking to a low-risk level. Michael is engaging well with the substance misuse provider and has become a volunteer peer mentor for other people who want to reduce their alcohol consumption. Michael said that if it were not for Jason making the safeguarding referral, his life could have turned out very differently.

Shez

Shez* has been known to social care since she was a baby. Shez's mum was in an unsafe relationship and Shez and her siblings were removed from their mum's care. The siblings were accommodated in different areas and Shez does not have regular contact with her family. When Shez was 18, she moved into her own flat. Shez has a formal diagnosis of depression and anxiety, autism and ADHD and prefers information to be repeated in exactly the same way so that she can process it. Shez is a very resourceful person. She went to college and successfully completed a catering course. When Shez finished college, she gained part-time employment within the catering industry and receives support to maintain her employment. Shez takes medication for ADHD and depression. Her health conditions and past trauma have an impact on her daily life.

Since Shez became an adult, professionals have expressed concern regarding her developing and maintaining personal relationships. Shez has been described as not always understanding that she might be vulnerable to exploitation or abuse in certain situations, and she has said that she visits people so that she is not alone. Shez has received support from health and social care professionals regarding what a healthy relationship is. Shez has a good relationship with her social worker and will generally discuss concerns readily if she feels comfortable with the professional.

Shez's social worker, Carrie* was increasingly worried about Shez's relationships with a number of adult males. There had been 32 safeguarding referrals in relation to exploitation, abuse, or neglect over a period of three years. Shez has also been discussed at MARAC on four occasions. Shez was in a relationship with three different males, all of whom were posing risks to her, including sexual, emotional, physical, and financial abuse. Following receipt of a Vulnerable Persons Assessment (VPA) from Cheshire Police, Shez eventually disclosed to Carrie that one of the males was paying her to engage in sexual activity with other males.

Carrie referred Shez to Cheshire East Complex Safeguarding Forum. A strategy meeting was subsequently arranged with representation from Cheshire police, who supported Shez to request information about the three males under Clare's Law. In addition, Shez was allocated to an IDVA, Melody* to provide a further layer of support.

Melody introduced Shez to a support group facilitated by a local domestic abuse charity and she has been attending on a regular basis. Following receiving support from Cheshire police and the IDVA, Shez has since ceased contact with the three males she was in a relationship with and said she has come to realise that these were not healthy relationships Shez told

Carrie that she feels she has ‘turned a corner.’ Despite the exploitation and abuse that Shez has experienced, she has continued to maintain her employment and said that she values the independence that this gives to her. Shez said that she no longer feels alone as she has made friends with some people from the domestic abuse support group, and she feels that they ‘get her’ as they have had similar experiences. This has also given her the confidence to try new activities and find a meaningful use for her leisure time. Shez has attended two social events with her work colleagues who are supportive of her and said that this is something she would not have considered taking part in previously as she used to feel nervous socialising with larger groups. Shez said she has started to set goals for herself and her next goal is to book a holiday to North Wales.

**Names are pseudonyms.*

Single Agency Self-Assessment 2024/25 –

CESAB conducted a self-assessment process with its partners in order to reflect on their agency’s safeguarding adults activity during 2024/25. This process allowed partners to consider areas such as Making Safeguarding Personal and how their agency has incorporated the recommendations made within the recent Safeguarding Adult Reviews. Below are the main findings from this assessment:

Making Safeguarding Personal (MSP):

Key to Making Safeguarding Personal are the six key principles of adult safeguarding:



These six principles apply to all partners of the SAB, the self-assessment provided assurance to the SAB that all partners are aware of these principles and apply them in their everyday safeguarding practice. Examples included the local authority highlighting how their case work recording system can capture MSP outcomes and whether they have been fully, partially, or not achieved. They also highlighted quarterly case MSP audits identifying areas of good practice and improvement. Housing also evidenced how social landlords ensure that the views, thoughts, and feelings of residents are clearly recorded, and evidence of resident

choice is apparent in case management. Housing providers also conduct audits of safeguarding cases regularly, which includes evaluation of making safeguarding personal and the evidencing of the 6 principles of safeguarding being adhered to. Both Health partners and the Police also reported similar auditing processes.

Person in a Position of Trust (PIPOT):

PIPOT is a framework for managing cases where allegations have been made against a person in a position of trust. It provides a process to ensure appropriate actions are taken to manage allegations, regardless of whether they are made in connection with the PIPOT's employment, in their private life, or any other capacity. All CESAB partners were able to evidence having a PIPOT procedures and robust HR management policies in place regarding managing allegations within their organisations.

Safeguarding Adults Review: The Clive Treacy SAR

Several of the recommendations within the Clive Treacy SAR are for national responses but the board is committed to looking at our local responses and to continuously improve, therefore, the self-assessment requested all partners to document what actions their agency put into place following the SAR of Clive Treacy.

Key Learning and Actions Taken by Partners:

Partners have reflected on the positive changes in multi-agency arrangements and information sharing in since the introduction of the Care Act 2014.

Cheshire Police have provided assurances that specialist advice is sought related to complexities in cases involving adults with a learning disability, both from and used to inform Crown Prosecution Service (CPS) decisions.

The Local authority and Integrated Care Board partners have given assurance about the guidance, commissioning expectations, and audit activity in place to ensure compliance with statutory guidance for out of area placements.

Homelessness and adult safeguarding:

Adult safeguarding is crucial for protecting vulnerable people experiencing homelessness, as they face heightened risks of abuse and neglect due to their circumstances. In May 2024, a ministerial letter was sent from government to Directors of Adult Social Care, Housing & SAB Chairs, it made a series of recommendations for Boards to consider regarding homelessness. The single-agency assessment 24/25 provided the Board with assurance on the support available to people experiencing homelessness and for individuals at risk of rough sleeping. Housing partners outlined the support available for homeless individuals to secure appropriate accommodation as well as to access to health and social care. The Board is committed to considering a Safeguarding Adults Review if concerns arise regarding the death or serious harm of an adult experiencing homelessness.

FUTURE PLANS

Our priorities 2025-26

The Board recognises more can be achieved by working together in partnership and has committed to the following areas for the year ahead, based on feedback, learning and analysis of current strengths.

CQC Recommendations: CQC are now assessing local authorities in England. They are looking at how well local authorities meet their duties under the Care Act 2014; this includes partnership working and adult safeguarding. By 2025/26 Cheshire East will have been through the CQC process, CESAB partners are committed to support the local authority with this and will take steps as a Board in response to any CQC recommendations.

Three Year Strategy: The Board's three-year strategy will be renewed in 2025/26. This strategy will be developed by all the Safeguarding Adults Board Partners in consultation with members of the Board's subgroups and safeguarding frontline practitioners. In particular, the strategy will capture the feedback from CQC, our service users and the residents of Cheshire East. Service user feedback will be embedded in all the priorities for future work of the Board.

Creating a Culture of Learning: We will promote continuous improvement in safeguarding practice by learning from experience and supporting workforce development. This work will consider how we share learning from SARs and other review processes widely across the partnership, with a clear methodology for reviewing the impact on practice.

Strengthening Partnerships: We will continue to strengthen our board by establishing closer working links and structures with the Community Safety Partnership (SCEP), and the Cheshire East Children's Safeguarding Partnership (CESCP) ensuring clear oversight of wider contextual safeguarding issues.

This report will be published on our website www.stopadultabuse.org.uk for all partners and members of the public to access. As required by the Care Act, this report will also be shared with the Chief Executive Officer and Lead Member at Cheshire East Council as well as the Police and Crime Commissioner, Healthwatch Cheshire East plus the Cheshire East Health and Wellbeing Board.

Cheshire East Safeguarding Adults Board, First Floor - Macclesfield Town Hall, Market Place, Macclesfield, Cheshire, SK10 1EA. email: lsab@cheshireeast.gov.uk



www.facebook.com/CheshireEastLSAB



www.stopadultabuse.org.uk